

LAKEVIEW BAPTIST CHURCH PLAT

A PORTION OF SECTIONS 4 AND 5, TOWNSHIP 46 SOUTH, RANGE 43 EAST,
CITY OF DELRAY BEACH, PALM BEACH COUNTY, FLORIDA

170

STATE OF FLORIDA
COUNTY OF PALM BEACH

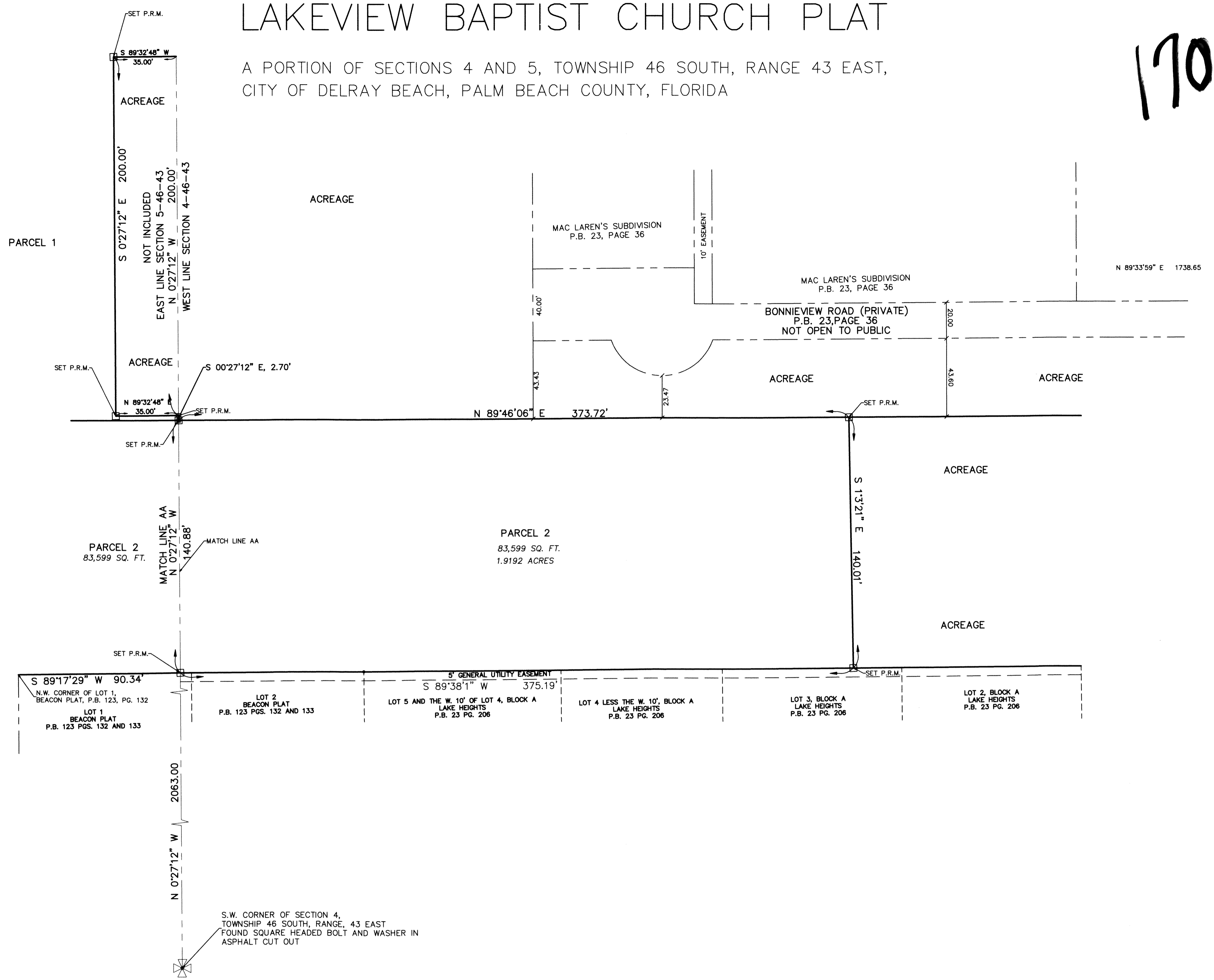
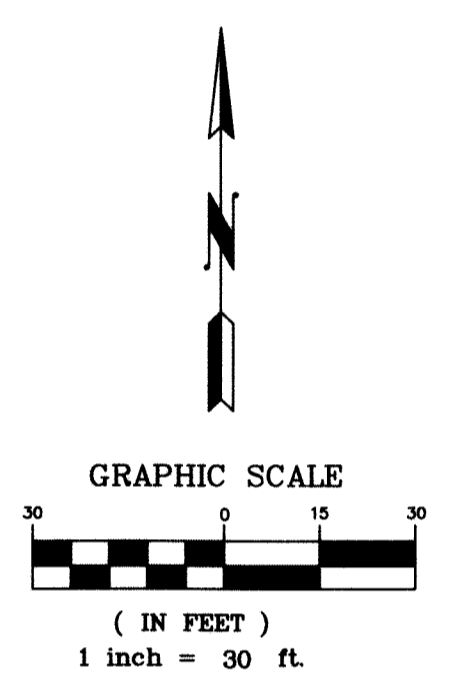
THIS PLAT WAS FILED FOR
RECORD AT _____ M.
THIS _____ DAY OF _____
A.D. 20____ AND DULY RECORDED
IN PLAT BOOK _____ ON
PAGE _____

SHARON R. BOCK
CLERK AND COMPTROLLER

BY:
DEPUTY CLERK

SHEET 3 OF 3

DEPUTY CLERK



- LEGEND:
- R - RADIUS
 - L - LENGTH
 - D - DELTA ANGLE
 - O.R.B. - OFFICIAL RECORD BOOK
 - SQ. FT. - SQUARE FEET
 - CL - CENTER LINE
 - P.B. - PLAT BOOK
 - PG. - PAGE
 - ESMT - EASEMENT
 - SUB. - SUBDIVISION
 - PCP - DENOTES PERMANENT CONTROL POINT NAIL AND METAL DISK STAMPED "PCP LB7219"
 - PRM - DENOTES PERMANENT REFERENCE MONUMENT 4" x 4" x 24" CONCRETE MONUMENT WITH ALUMINUM DISK STAMPED PAUL A. DAVIS INC. LB7219

"NOTICE: THIS PLAT, AS RECORDED IN ITS GRAPHIC FORM, IS THE OFFICIAL DEPICTION OF THE SUBDIVIDED LANDS DESCRIBED HEREIN AND WILL IN NO CIRCUMSTANCES BE SUPPLANTED IN AUTHORITY BY ANY OTHER GRAPHIC OR DIGITAL FORM OF THE PLAT. THERE MAY BE ADDITIONAL RESTRICTIONS THAT ARE NOT RECORDED ON THIS PLAT THAT MAY BE FOUND IN THE PUBLIC RECORDS OF PALM BEACH COUNTY."

THIS INSTRUMENT PREPARED BY

PAUL A. DAVIS, P.S.M.
PROFESSIONAL SURVEYOR &
MAPPER CERTIFICATE LS 4531
STATE OF FLORIDA
PAUL A. DAVIS, INC.
4710 N.E. 17TH AVENUE
POMPAHO BEACH, FLA. 33064
LICENSED BUSINESS NO. 7219